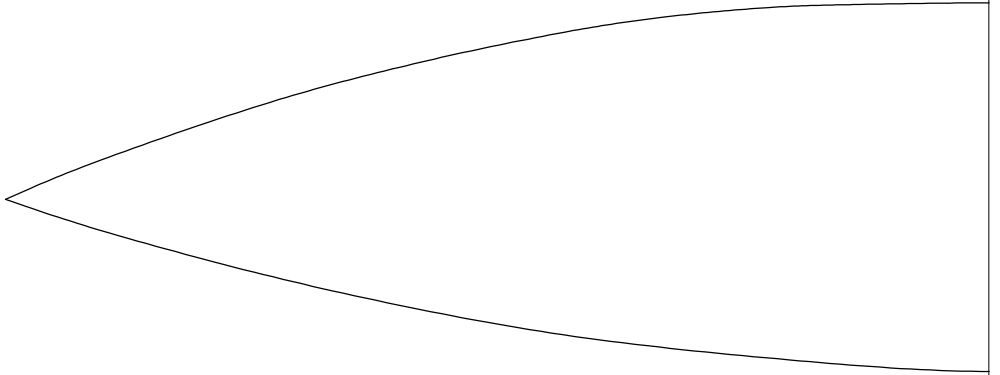


**Rafale**





Rafale

300x600  
(2-of

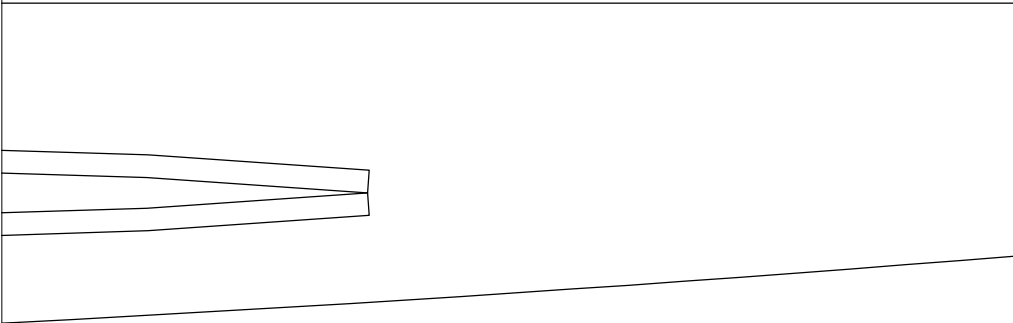
Top

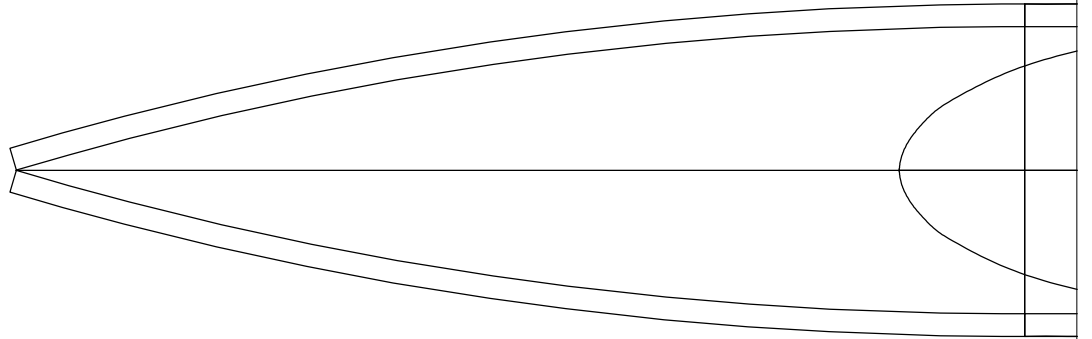


0mm  
f)

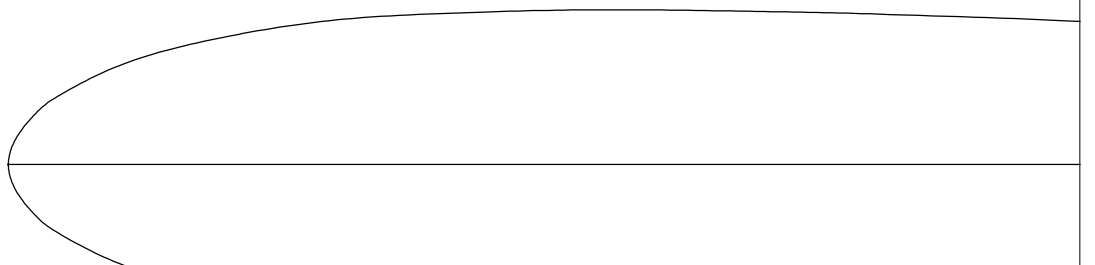
35

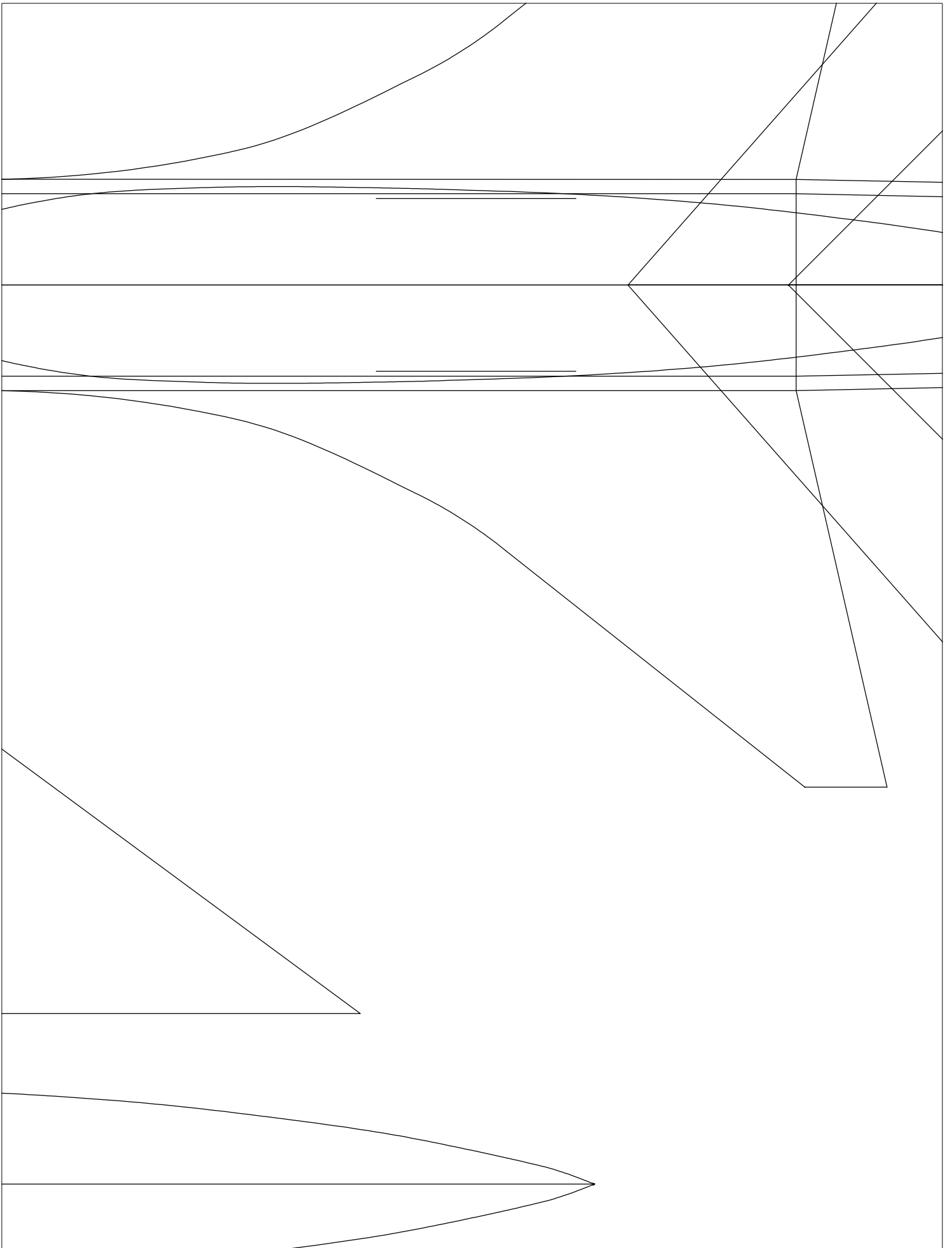
35

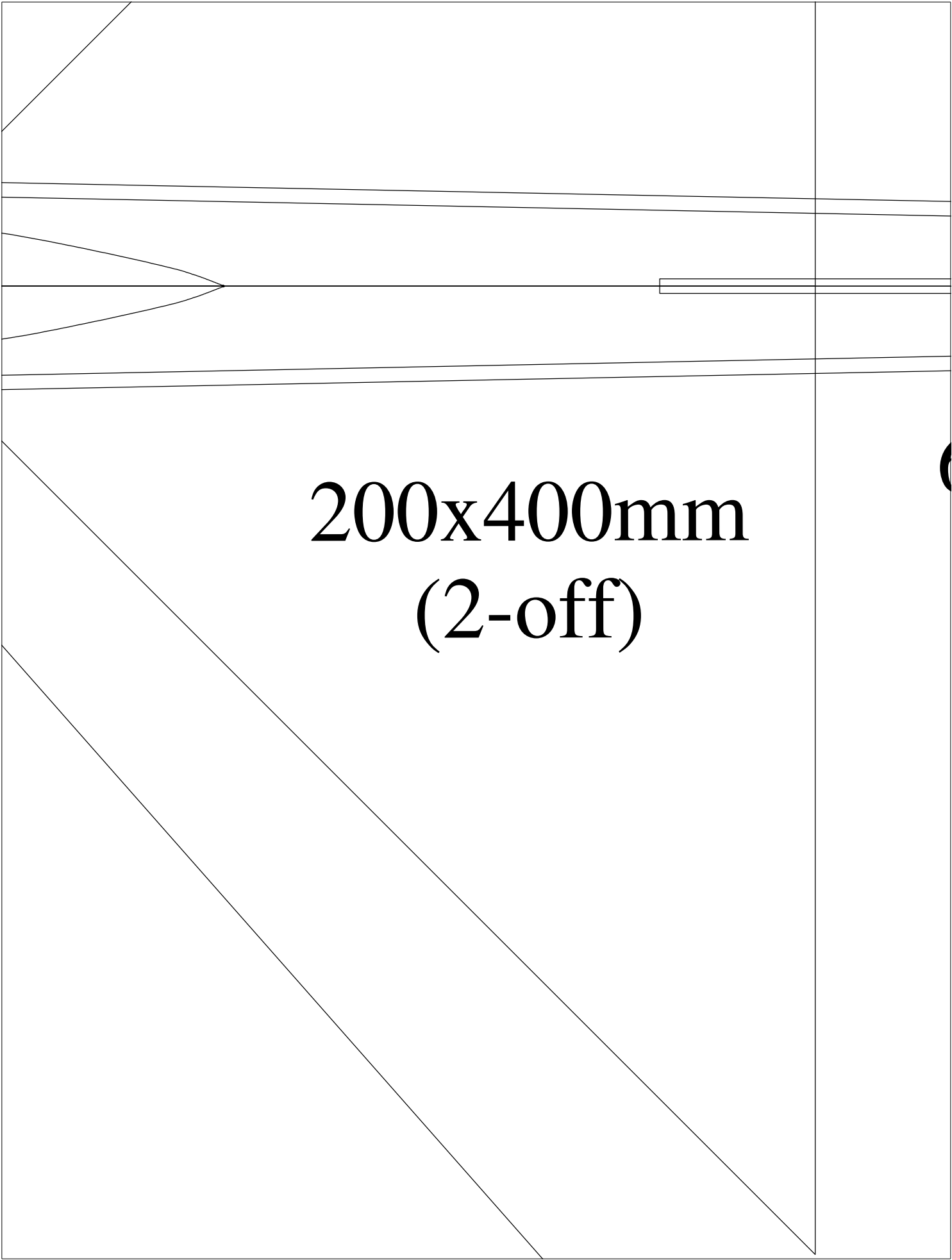




Rafale

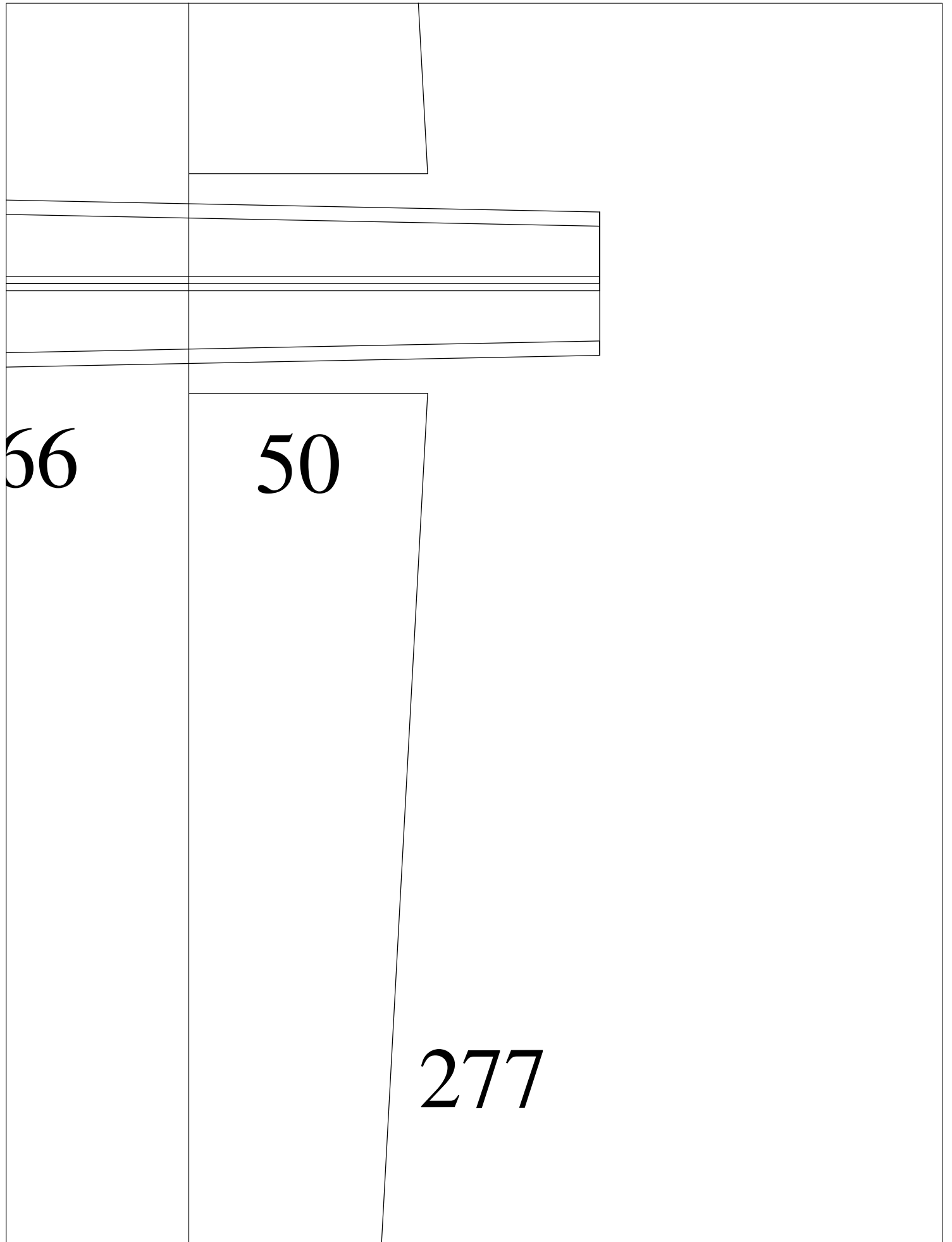






200x400mm  
(2-off)

The image shows a technical drawing of a rectangular plate with a width of 200mm and a height of 400mm. The drawing includes a hole on the right side and a notch on the left side. The hole is a simple rectangular cutout. The notch is a semi-circular cutout on the left edge, with its flat side facing right. The drawing is presented in a standard technical format with a vertical centerline on the right side, indicating that the object is symmetrical. The text '200x400mm (2-off)' is centered on the drawing, indicating the dimensions and the quantity of parts.

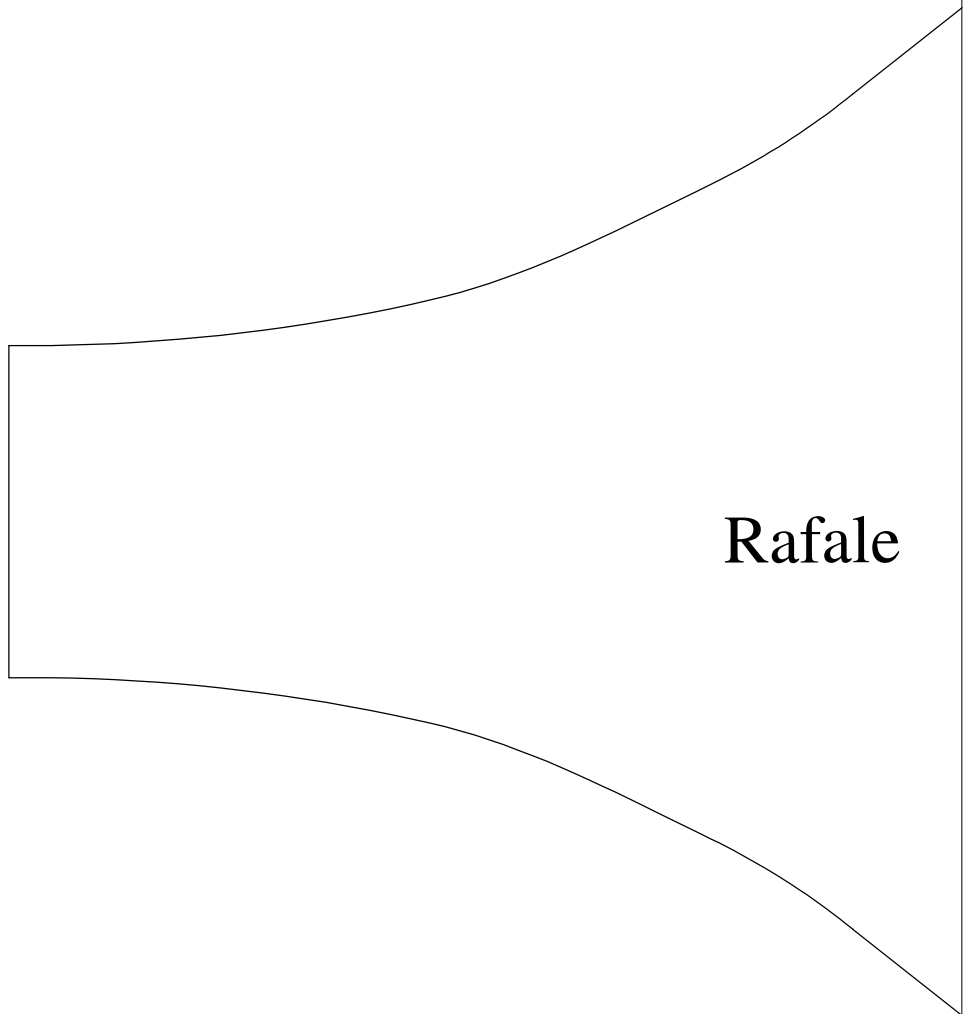


66

50

277

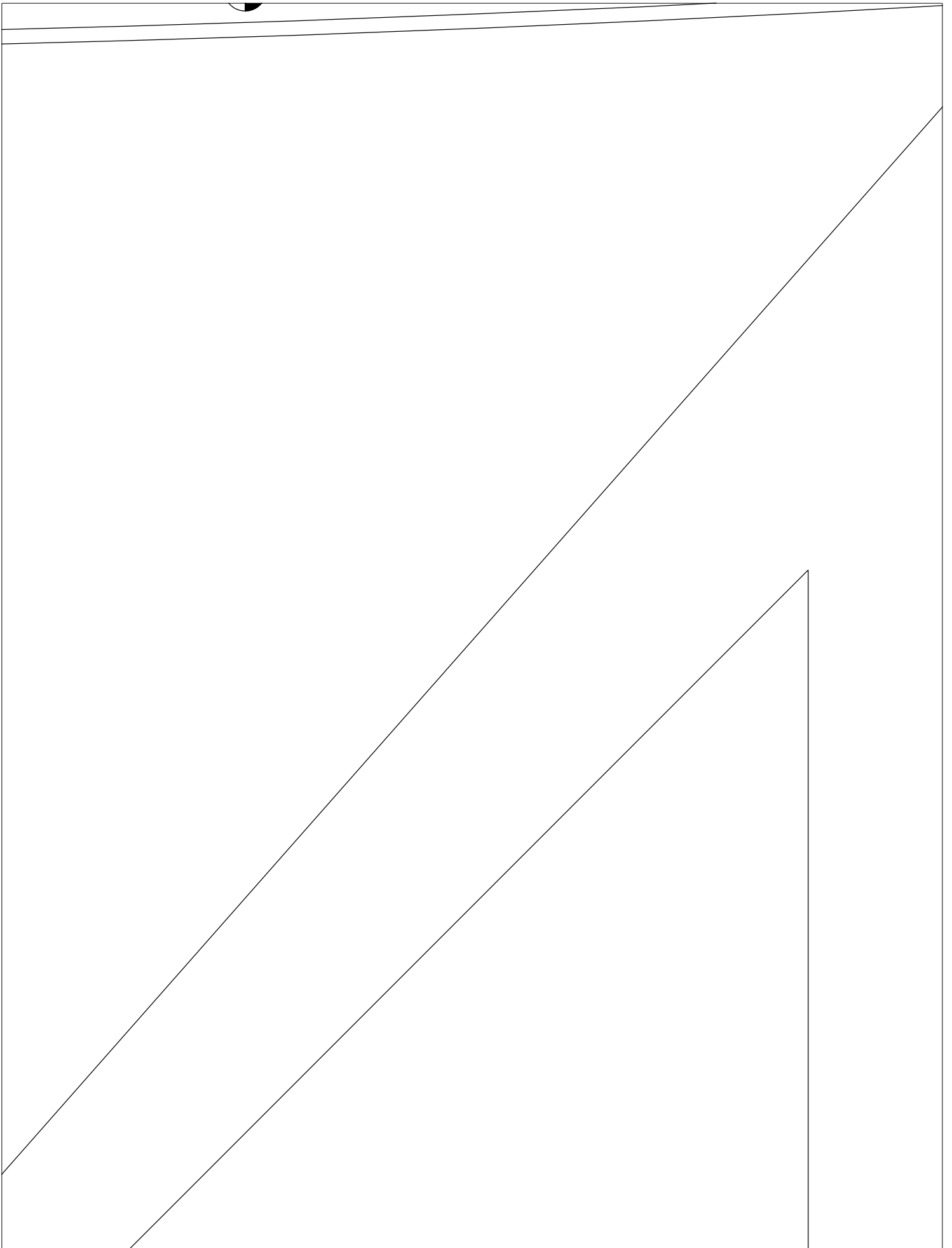


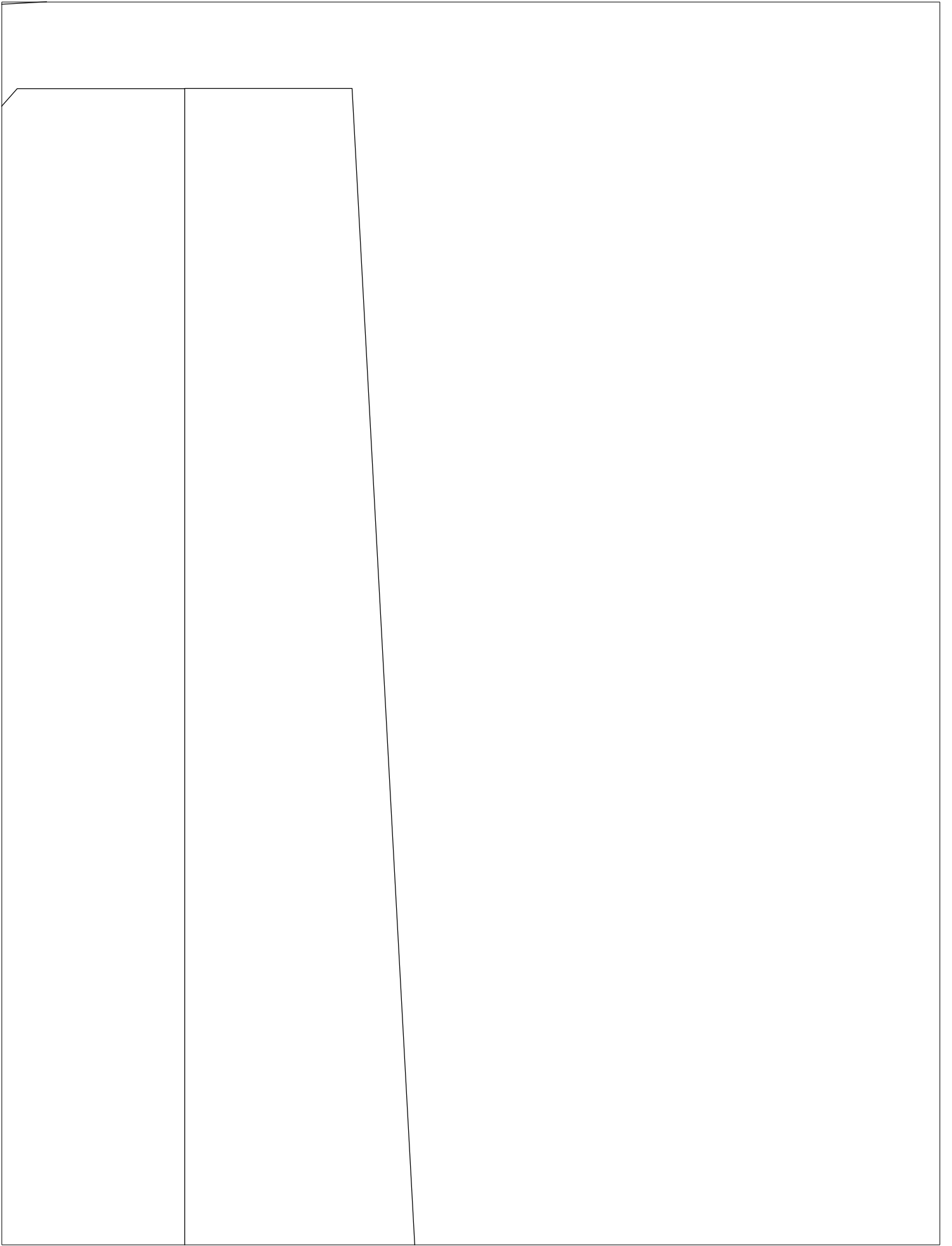


**Rafale**



# Dassault 'Rafale'









Top



