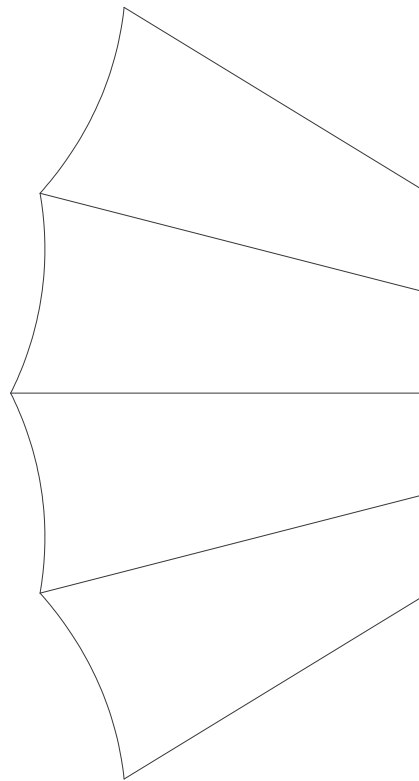
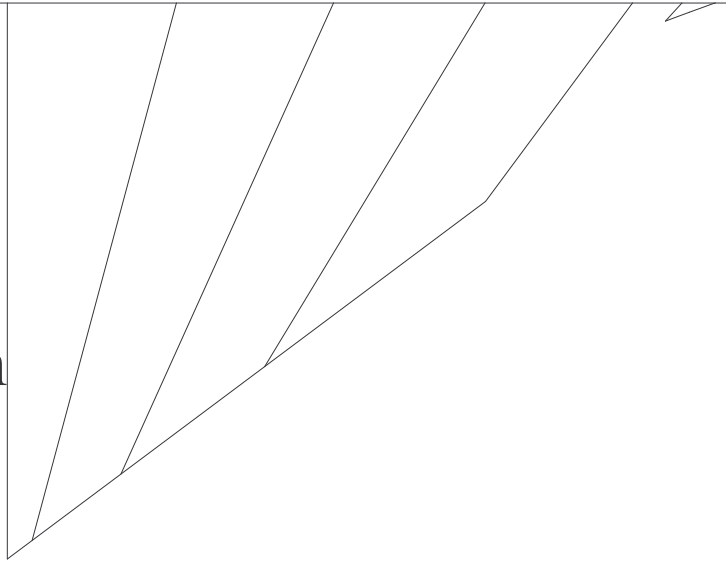
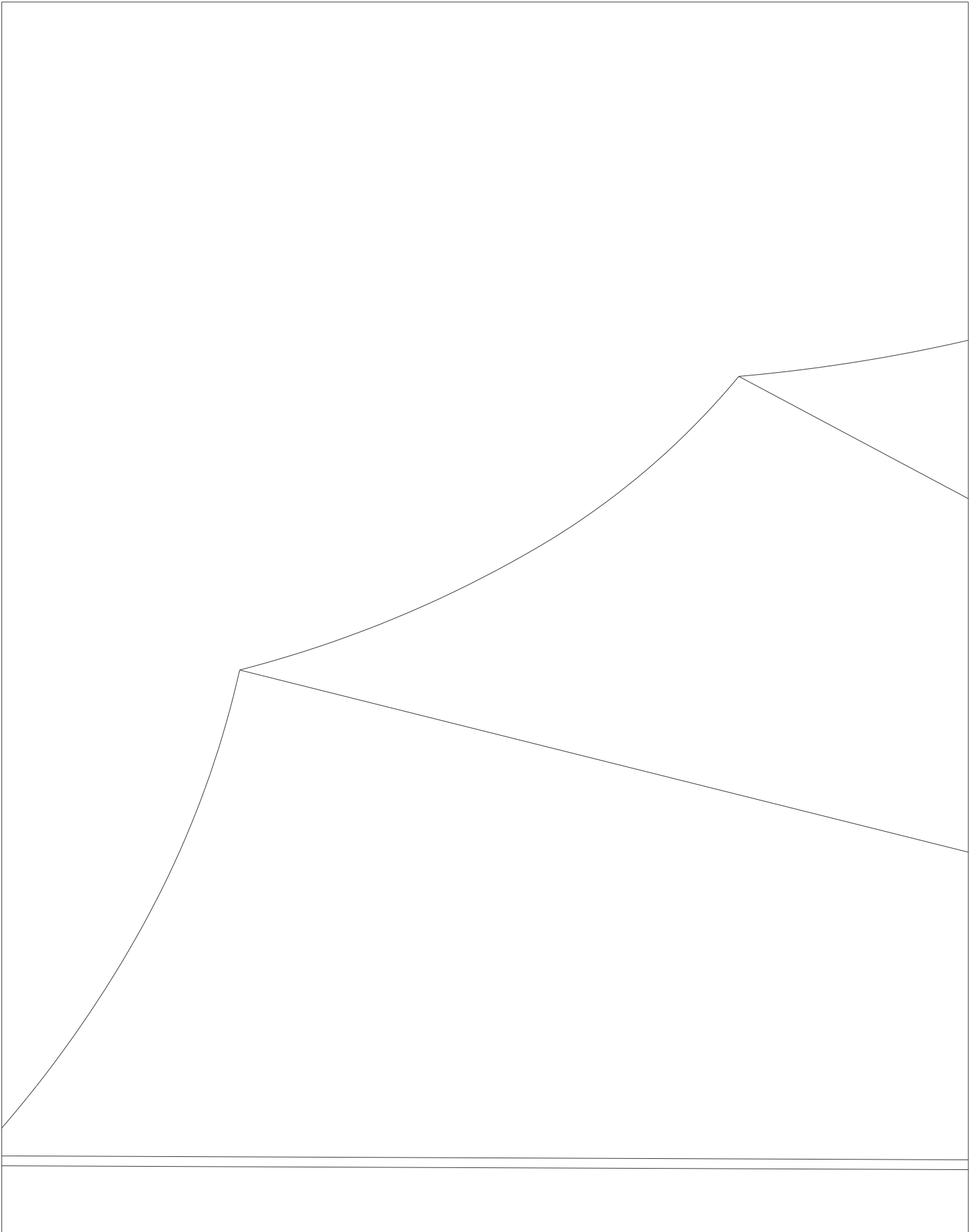


200mm

100mm





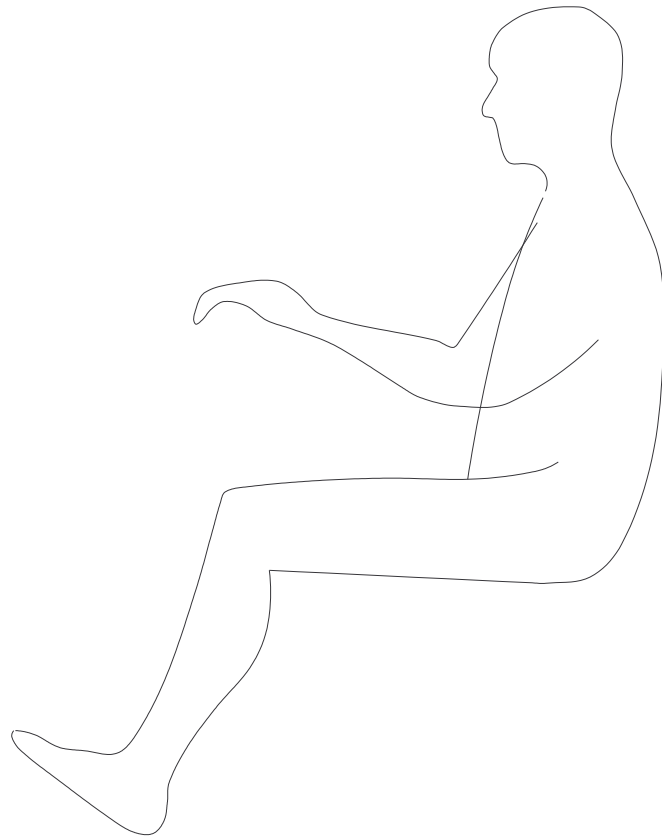




Ab
v
ab

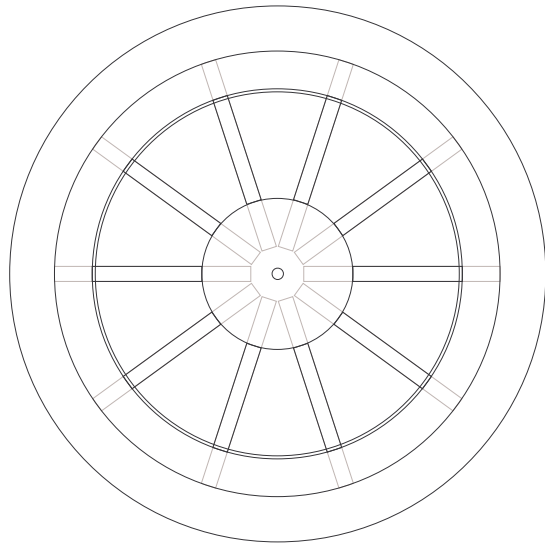
Chitti rear sides
2mm Depron
(top oversided)

out 15mm
washout
out here



Chitti seat
3mm Depron

C

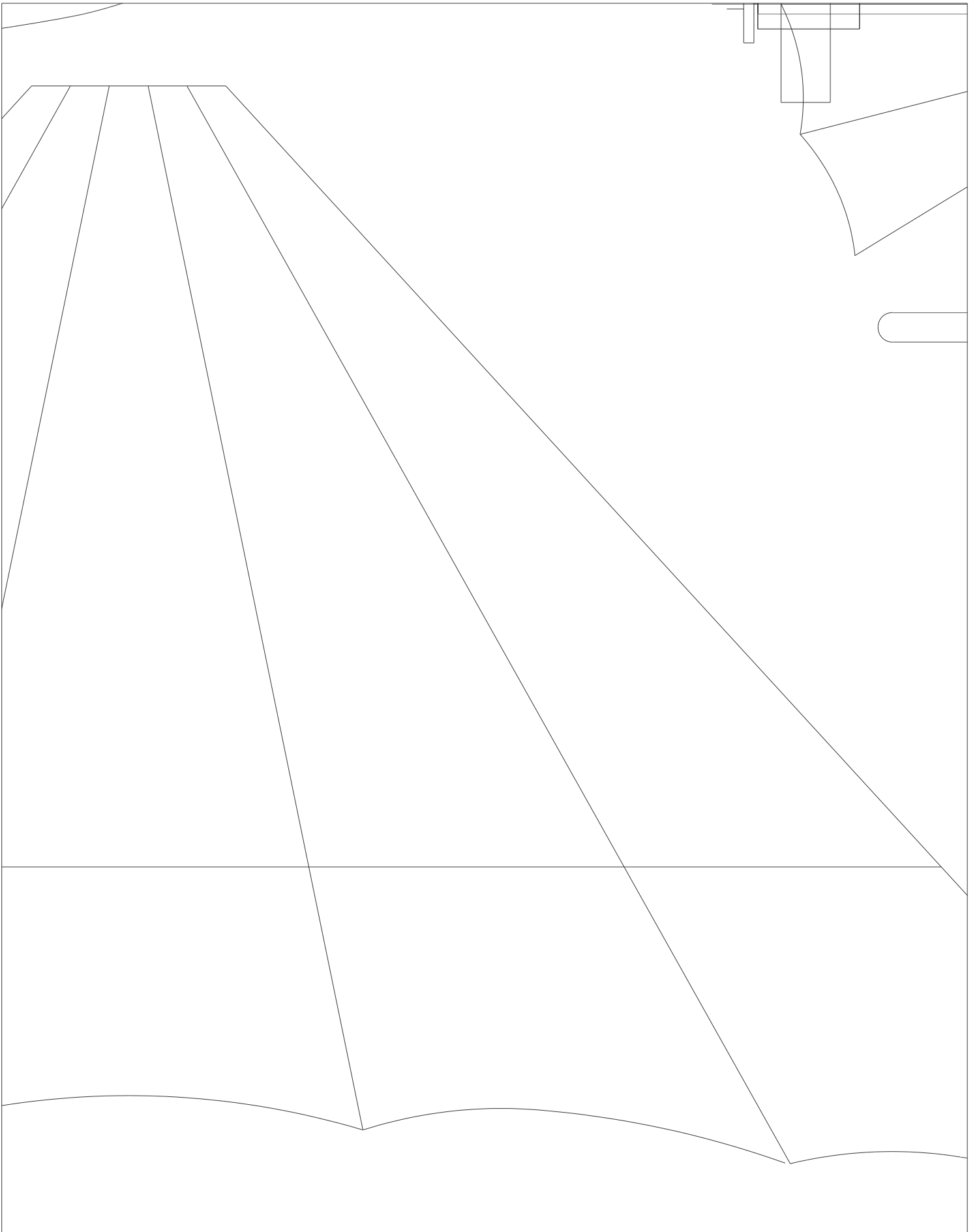


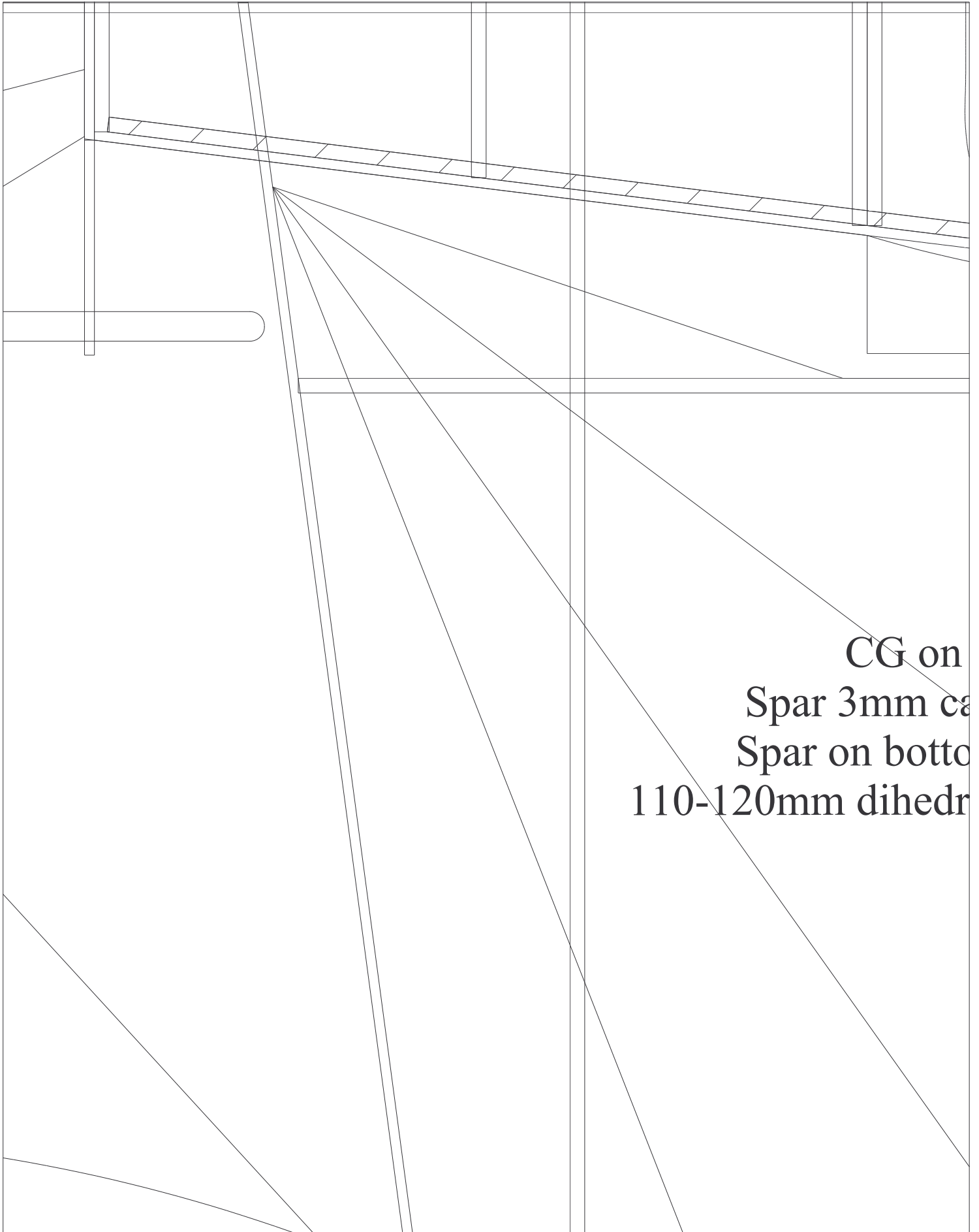
Chitti mudguard 3mm Depron

Chitti front mudguard 3mm Depron

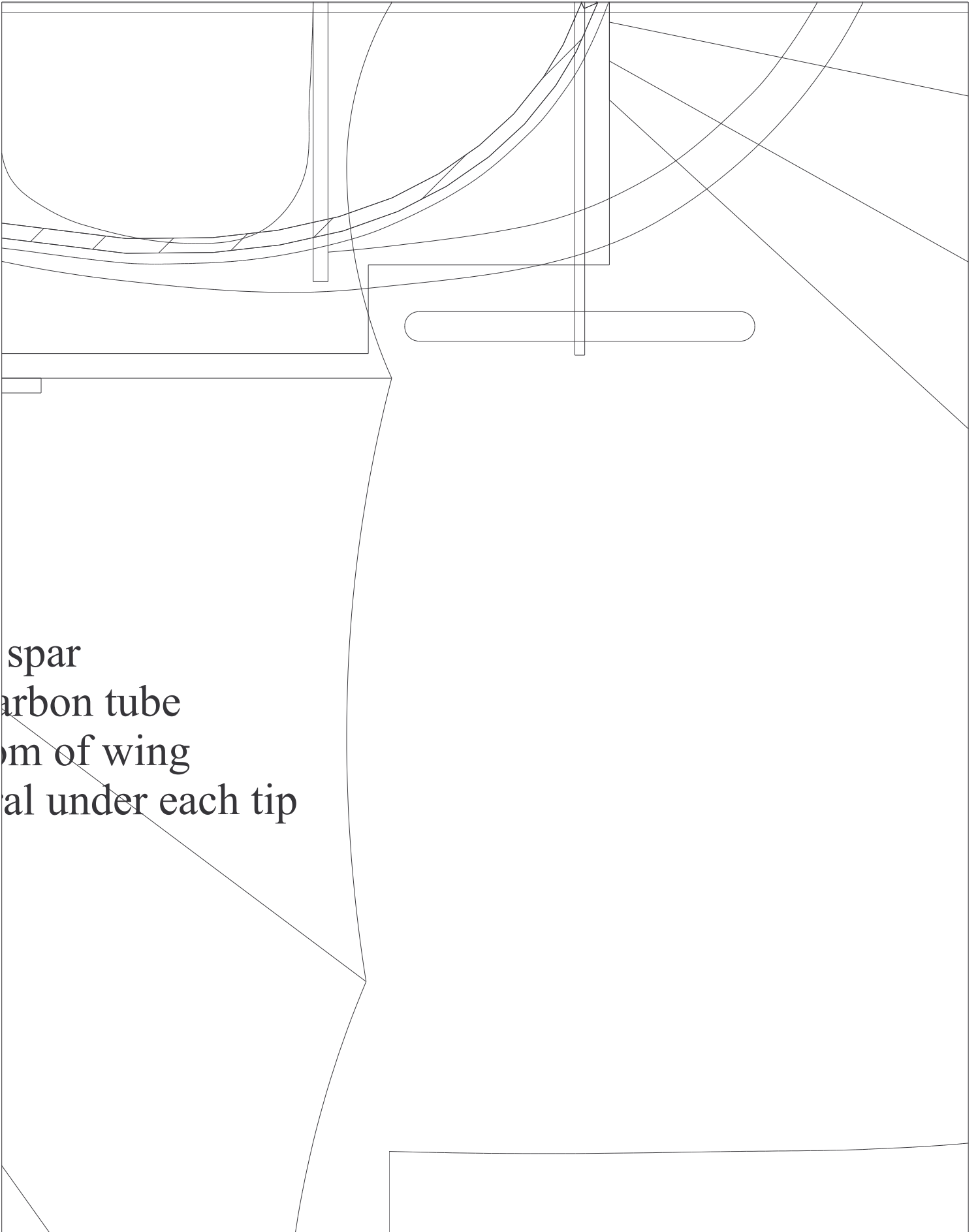




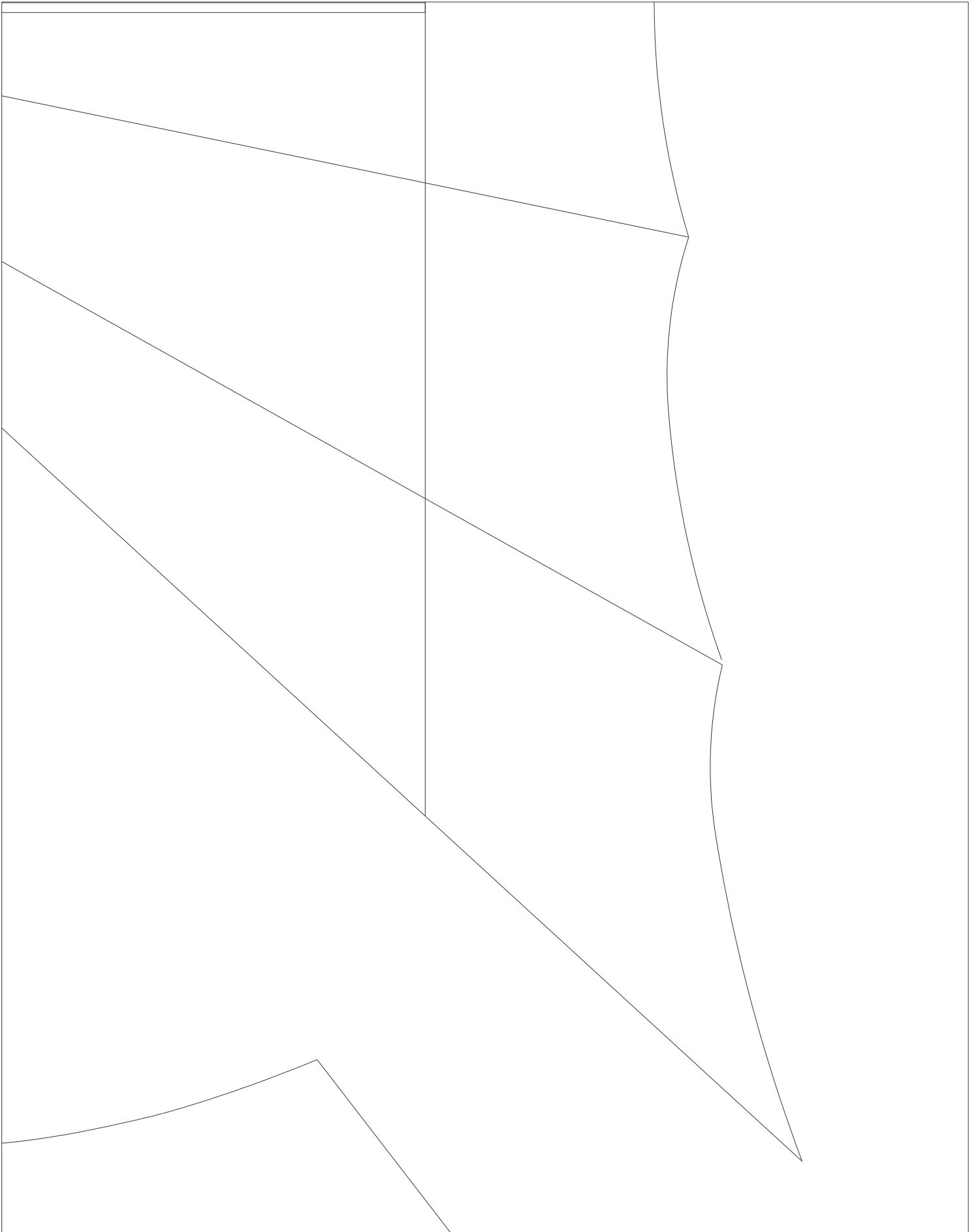


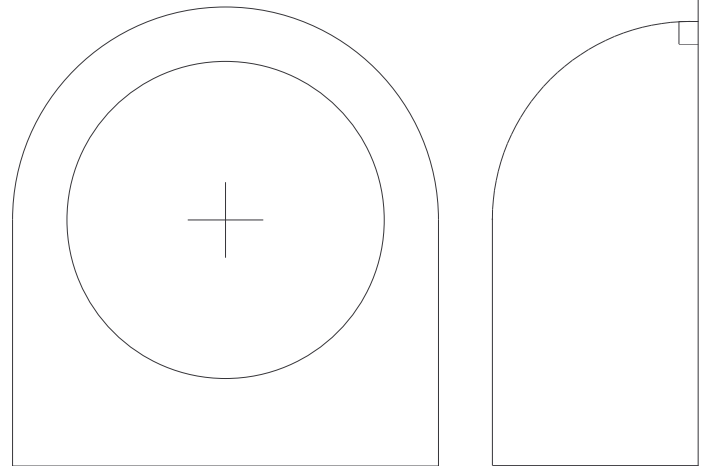
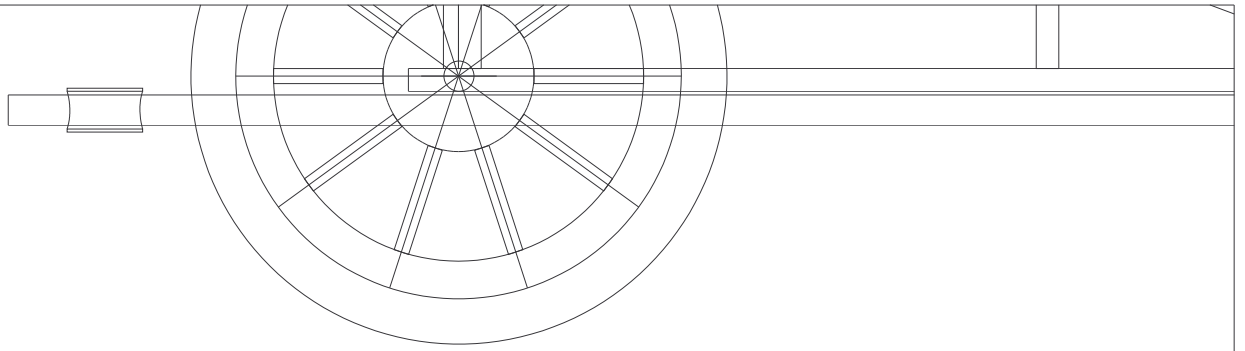


CG on
Spar 3mm ca
Spar on botto
110-120mm dihedr

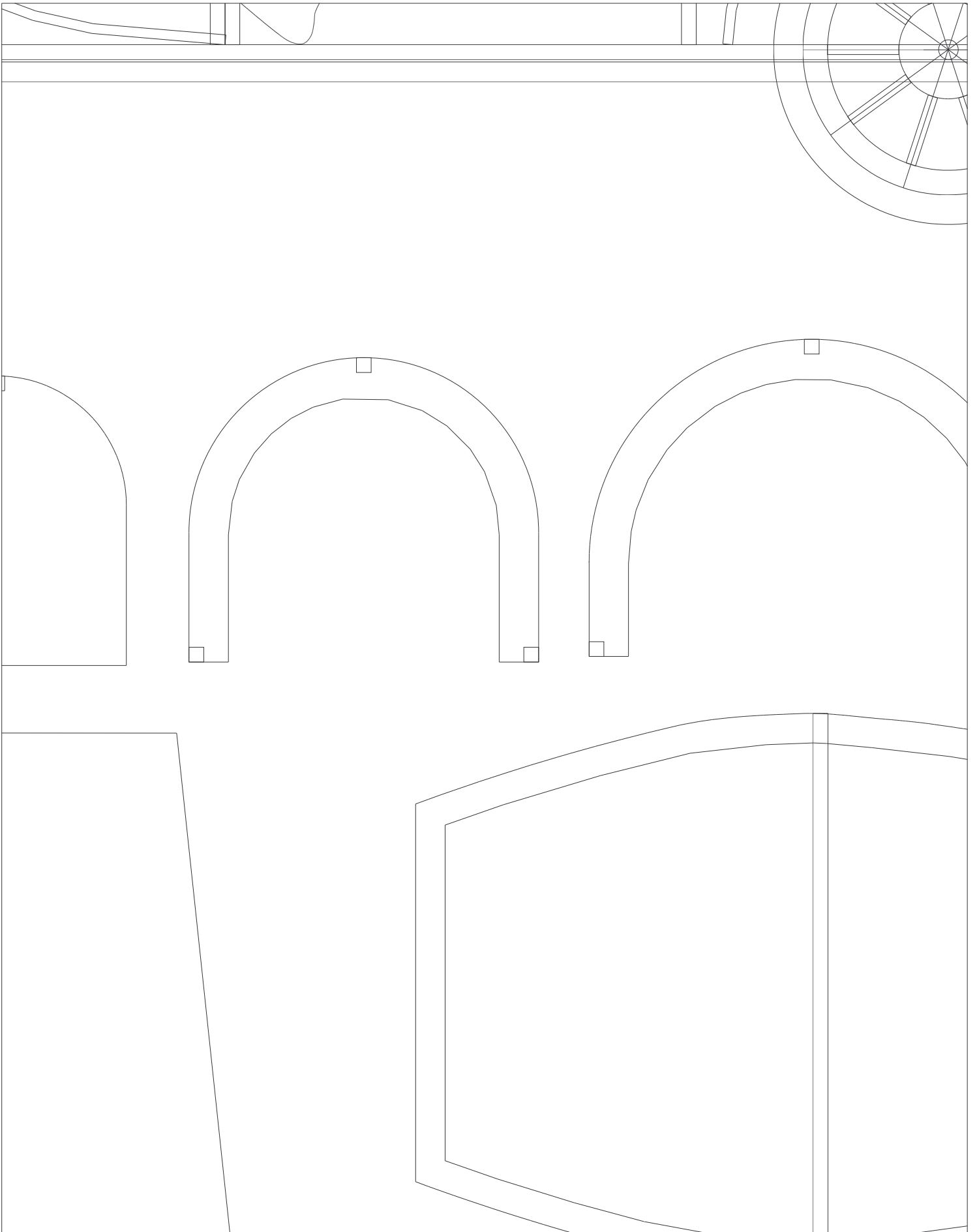


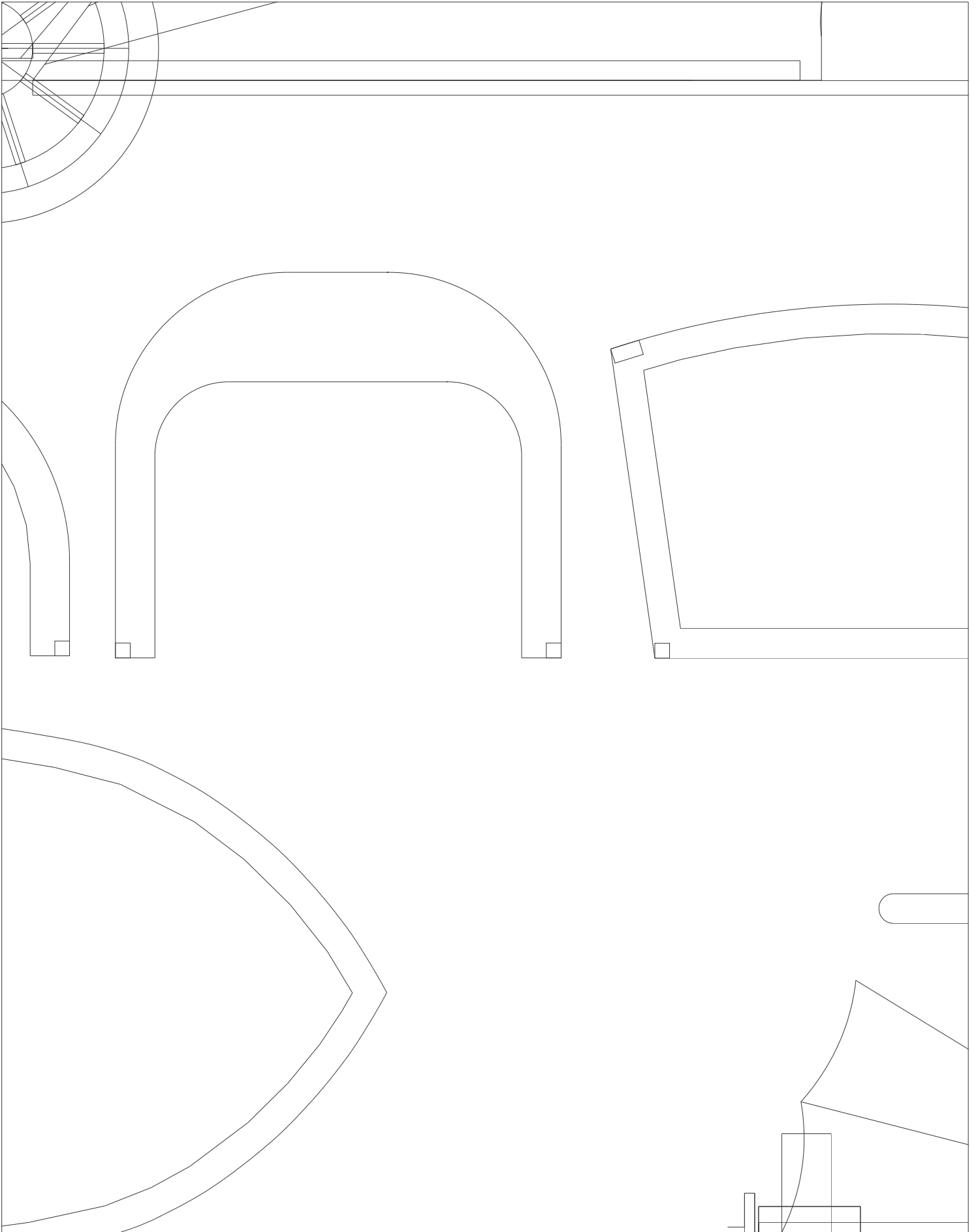
spar
carbon tube
bottom of wing
tail under each tip

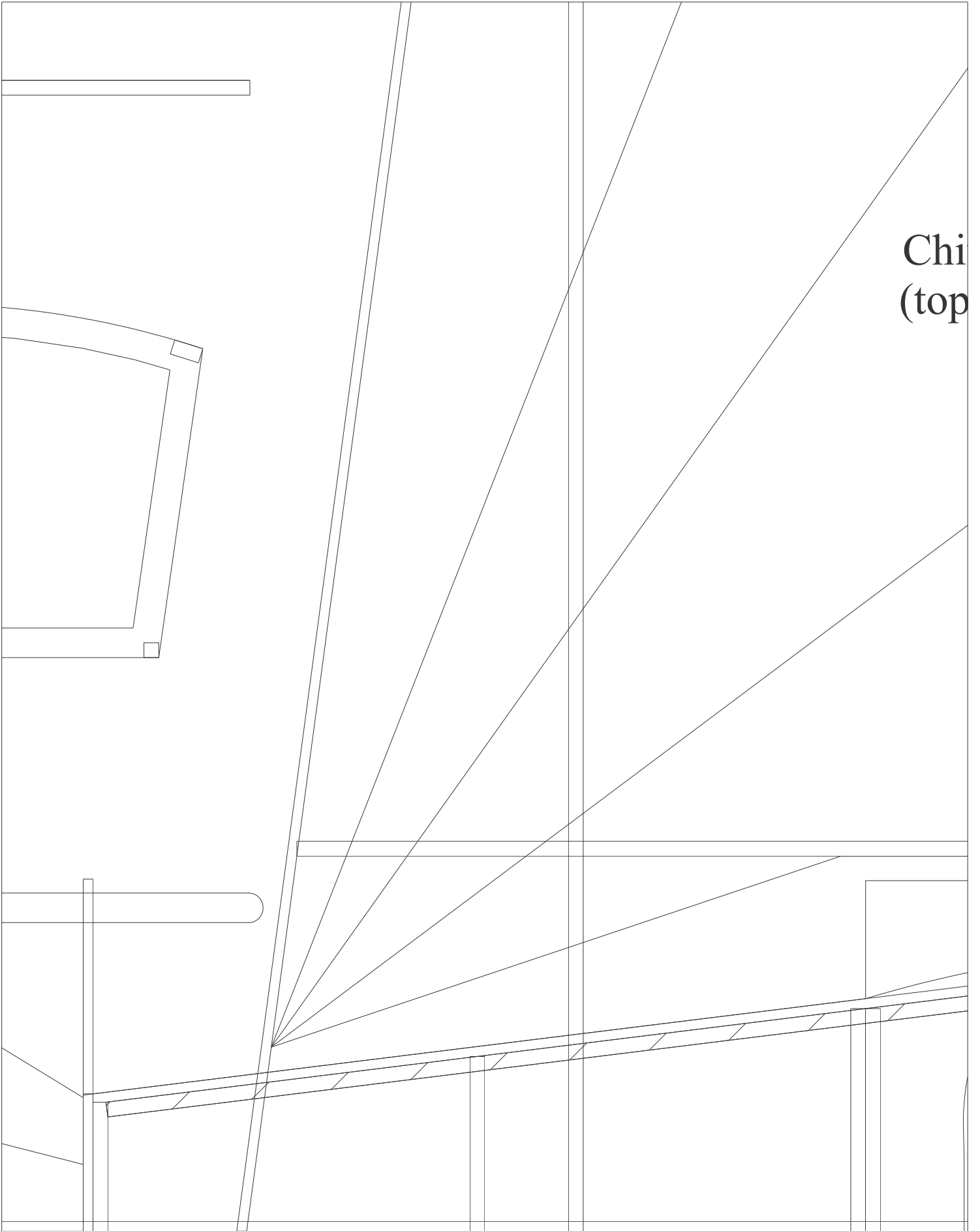




Chitti engine cover
2mm Depron



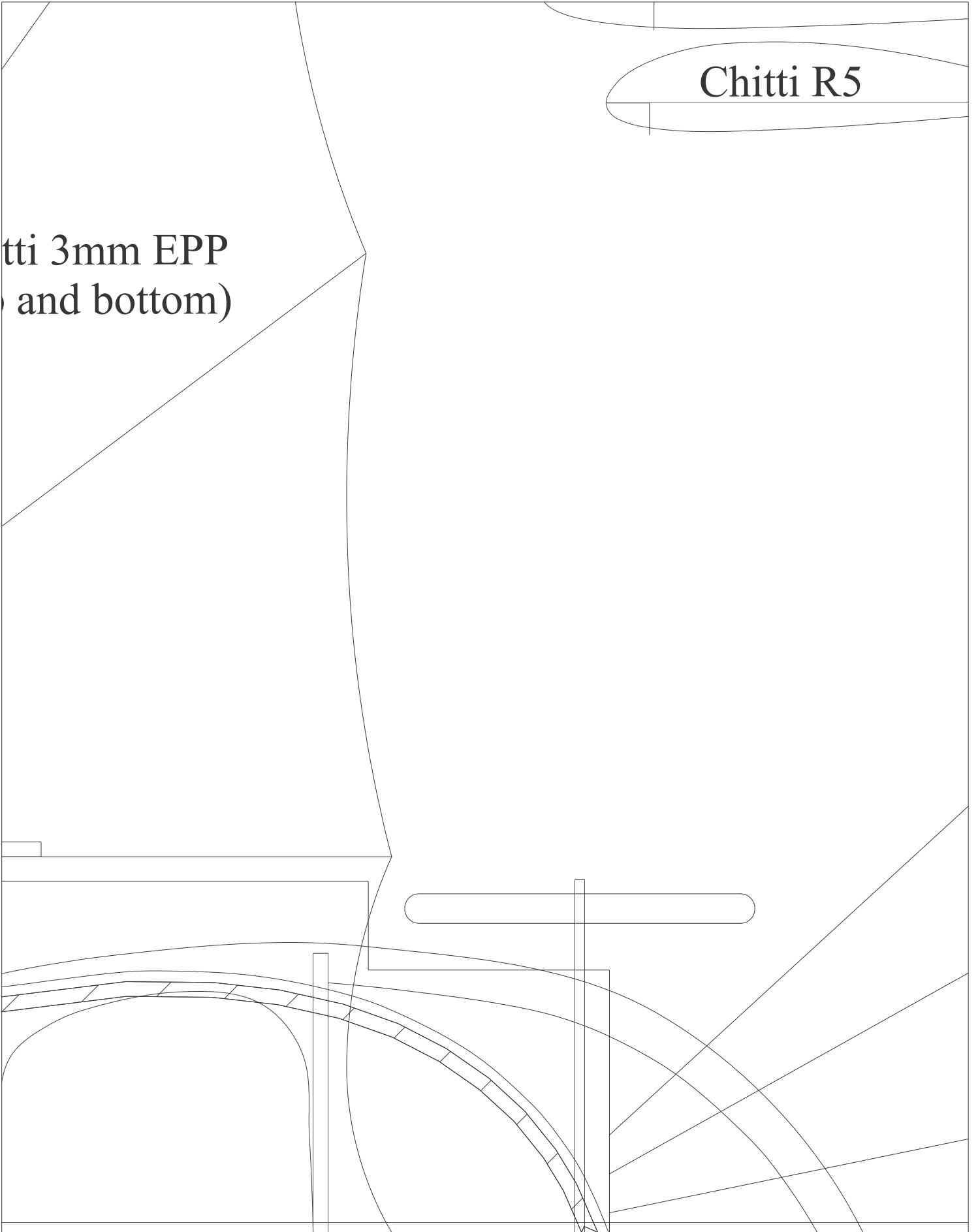


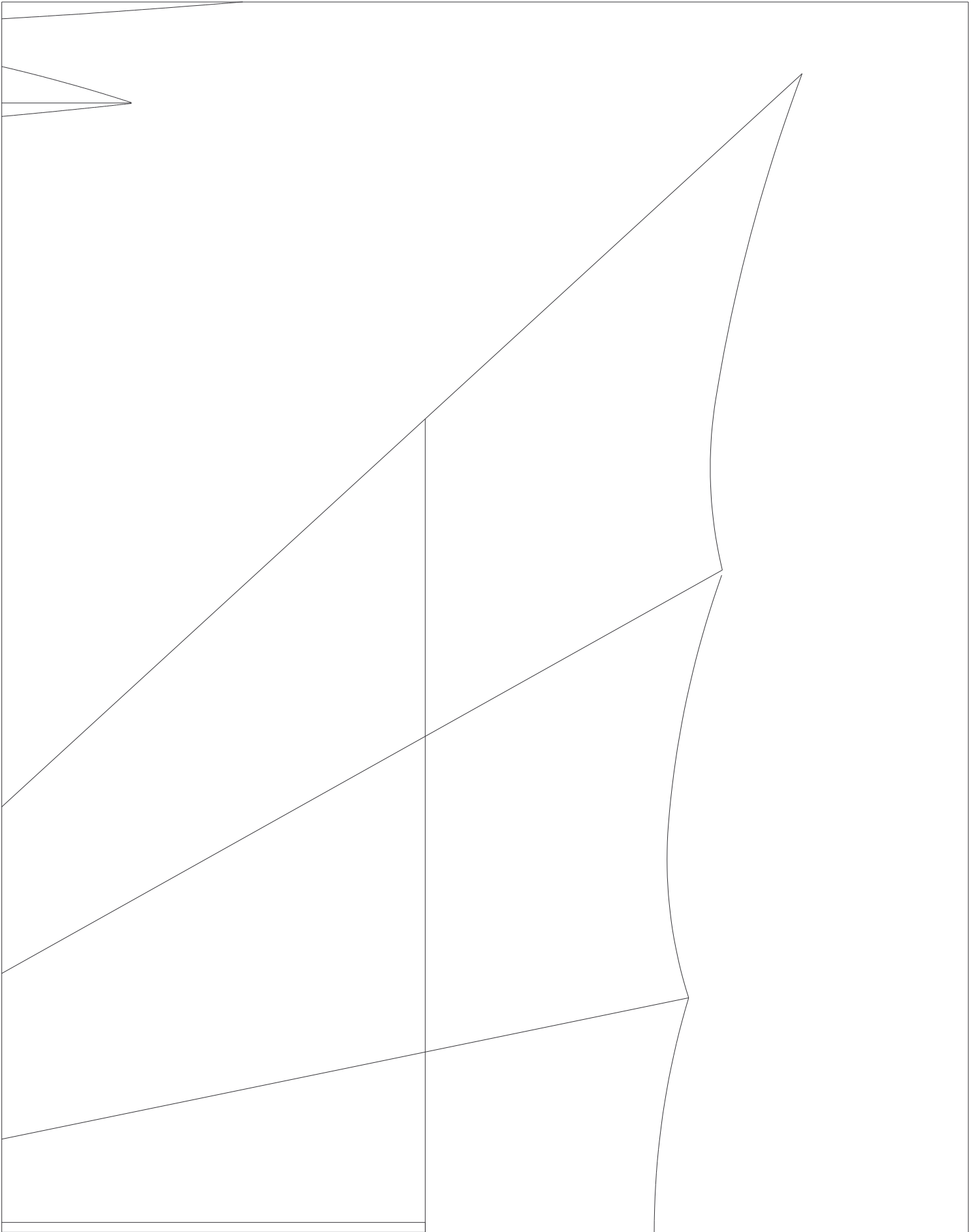


Chi
(top

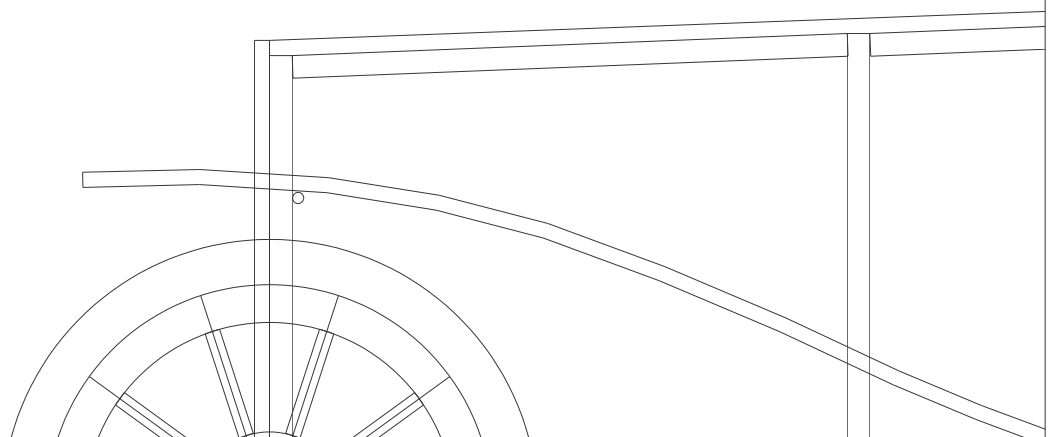
Chitti R5

tti 3mm EPP
(and bottom)





'Chitti Chitti Bang Bang
Plan design copyright David
8-Dec-05 www.flyelectric.com
Model name/prototype copy



ang' v1
d Theunissen
ikgateway.net
yright MGM

